

Fast Egg Shell Tester for testing and checking the breaking strength

Fast Egg Shell Tester to measure the egg shell breaking strength.

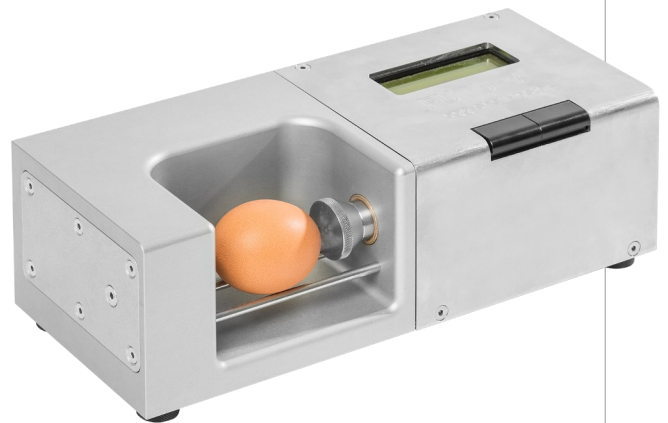
The stability of the eggshell is one of the most important parameters for egg quality.

With our breaking strength measuring device, the breaking strength of eggs can be determined easily and quickly. The FEST device has a very robust metal housing and can be operated quickly and easily with two buttons.

The breaking strength of the eggshell can be displayed either in newtons or grams.

A measurement only takes approx. 2-3 sec. and means a very low time expenditure.

The display is illuminated and easy to read. The FEST device can optionally be connected to components such as a PC incl. software or a printer for data acquisition. For mobile use, e.g. for field staff of feed manufacturers, there is an optional battery module for wireless operation as well as a Bluetooth function with an app for data collection in an Android device such as a tablet or smartphone. The data can then be sent via WhatsApp or e-mail.



Options for the Bröring breaking strength measuring system FEST (Fast Egg Shell Tester)

Art.-No.: 1101 *Bröring EggQuality System 3.0 FEST*
inclusive:
Power supply unit (Art.-No.: 2011)
Balancing weight 1000 g (Art.-No.: 1518)
Carrying case (Art.-No.:6022)

Dimensions (case, 350 x 150 x 290 mm (W*H*D)
Weight: 8.8 kg (incl. accessories and case)



Art.-No.: 1102 *Bröring EggQuality System 3.0 FEST with Bluetooth*
inclusive:
Power supply unit (Art.-No.: 2011)
Balancing weight 1000 g (Art.-No.: 1518)
Carrying case (Art.-No.:6022)



Art.-No.: 1103 *Bröring EggQuality System 3.0 FEST with Battery and charger*
Inclusive:
Power supply unit (Art.-No.: 2011)
Balancing weight 1000 g (Art.-No.: 1518)
Carrying case (Art.-No.:6022)



Art.-No.: 1104 *Bröring EggQuality System 3.0 FEST Bluetooth with Battery and charge*
Inclusive:
Power supply unit (Art.-No.: 2011)
Balancing weight 1000 g (Art.-No.: 1518)
Carrying case (Art.-No.:6022)

